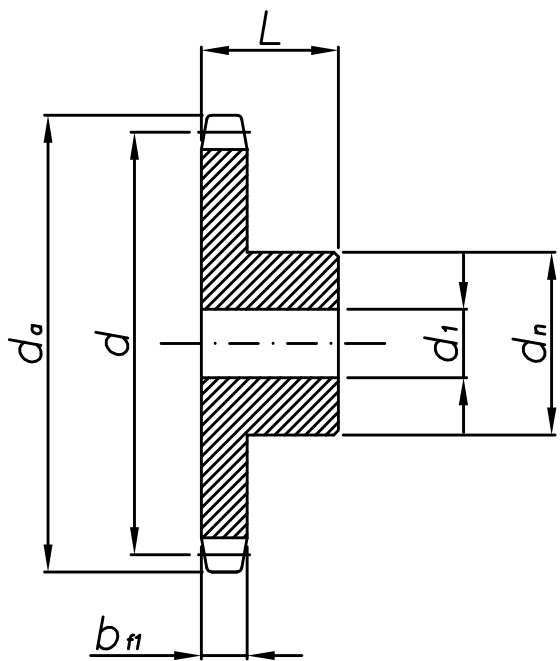
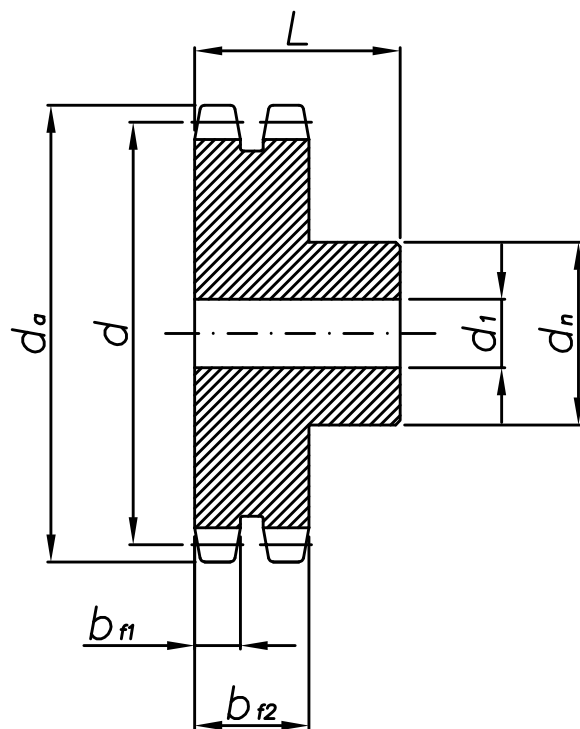


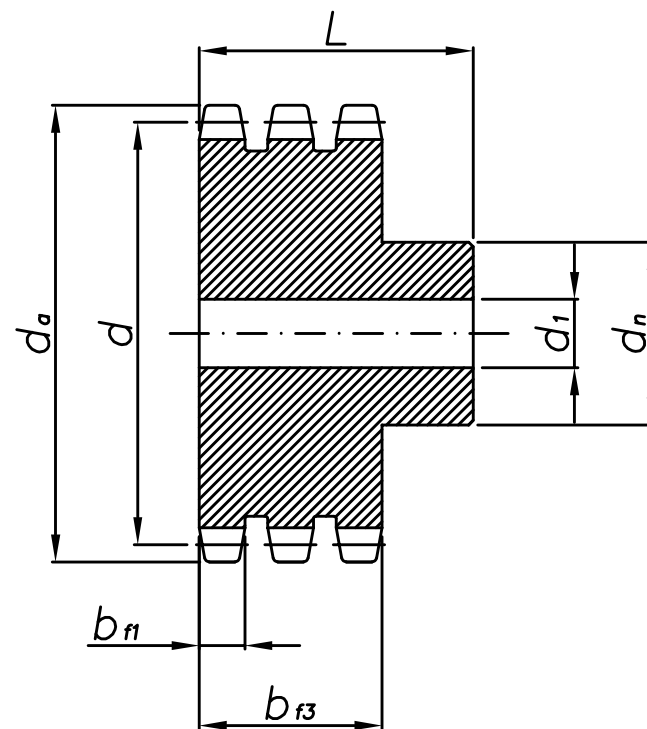
KOŁA ŁAŃCUCHOWE Z PIASTĄ — 06B
SPROCKETS — 06B



SS



SD



ST

Koła łańcuchowe z piastą - 06B

Sprockets - 06B

Szerokość zęba/ <i>tooth width</i>	$b_{f1} = 5,3 \text{ mm}$	$b_{f2} = 15,4 \text{ mm}$	$b_{f3} = 25,6 \text{ mm}$
------------------------------------	---------------------------	----------------------------	----------------------------

z	d	d _a	SS			SD			ST		
			d ₁	d _n	L	d ₁	d _n	L	d ₁	d _n	L
8	24,89	28,0	8	15	22	8	15	22	8	15	32
9	27,85	31,0	8	18	22	8	18	22	9	18	32
10	30,82	34,0	8	20	22	8	20	22	10	20	32
11	33,80	37,0	8	22	25	10	22	25	12	22	35
12	36,80	40,0	8	25	25	10	25	25	12	25	35
13	39,80	43,0	10	28	25	10	28	25	12	28	35
14	42,80	46,3	10	31	25	10	31	25	12	31	35
15	45,81	49,3	10	34	25	10	34	25	12	34	35
16	48,82	52,3	10	37	28	12	37	30	12	37	35
17	51,83	55,3	10	40	28	12	40	30	12	40	35
18	54,85	58,3	10	43	28	12	43	30	12	43	35
19	57,87	61,3	10	45	28	12	46	30	12	46	35
20	60,89	64,3	10	46	28	12	49	30	12	49	35
21	63,91	68,0	12	48	28	16	52	30	16	52	40
22	66,93	71,0	12	50	28	16	55	30	16	55	40
23	69,95	73,5	12	52	28	16	58	30	16	58	40
24	72,97	77,0	12	54	28	16	61	30	16	61	40
25	76,00	80,0	12	57	28	16	64	30	16	64	40
26	79,02	83,0	12	60	28	16	67	30	16	67	40
27	82,04	86,0	12	60	28	16	70	30	16	70	40
28	85,07	89,0	12	60	28	16	73	30	16	73	40
29	88,09	92,0	12	60	30	16	76	30	16	76	40
30	91,12	94,7	12	60	30	16	79	30	16	79	40
31	94,15	98,3	14	65	30	16	80	30	16	80	40
32	97,17	101,3	14	65	30	16	80	30	16	80	40
33	100,20	104,3	14	65	30	16	80	30	16	80	40
34	103,23	107,3	14	65	30	16	80	30	16	85	40
35	106,26	110,4	14	65	30	16	80	30	16	85	40
36	109,29	113,4	14	70	30	16	90	30	16	90	40
37	112,32	116,4	14	70	30	16	90	30	16	90	40
38	115,34	119,5	14	70	30	16	90	30	16	90	40
39	118,37	122,5	14	70	30	16	90	30	16	90	40
40	121,40	125,5	14	70	30	16	90	30	16	90	40